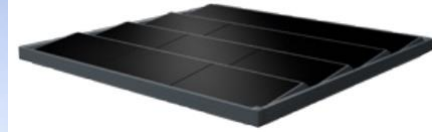




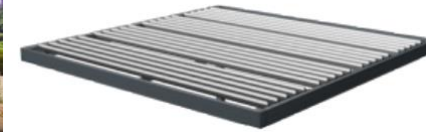
SOON



DESIGN YOUR OWN ROOF



100% PHOTOVOLTAIC
Power generation



100% BIOCLIMATIC
Regulation of ventilation
and light flow



BIOVOLTAIC
Both!



HARMON-E 400

BIOVOLTAIC PERGOLAS

ENERGY PRODUCTION AND SOLAR PROTECTION

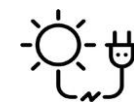
HARMON-E 400 has a modular watertight roof.

So you can choose between an electricity-generating roof, made up of photovoltaic modules, or a bioclimatic roof that allows air and light to circulate, thanks to motorised adjustable slats. The comfort of a bioclimatic roof or the savings of a photovoltaic roof, don't choose! Opt for both by customising your roof to suit your needs.

HARMON-E 400, premium shade combined with energy efficiency!



Enhance your home



Electricity generation



Eco-friendly



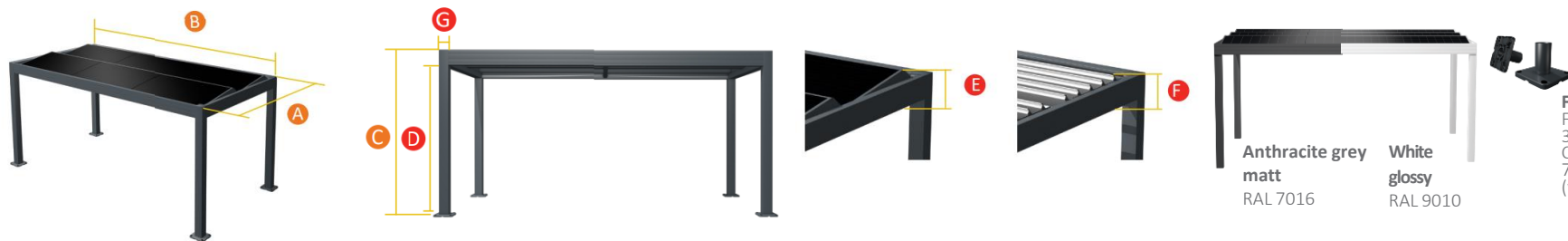
Enjoy your terrace all year round!



Comfort

PREMIUM

STANDARD FEATURES



Foot bases
Footing section:
300 x 300 mm.
Colours available: RAL
7016 (grey) and 9010
(white).



2x2 modules 2x3 modules 3x2 modules 4x2 modules 3x3 modules 4x3 modules

Versions

Surface (sqm)	12	17	17	22	25	33
Width (mm)	A 3109	3109	4491	5873	4491	5873
Length (mm)	B 3816	5586	3816	3816	5586	5586
Height (mm) with foot base (h : 30 mm)	C	2672 ou 2972				
Foot Height (mm)	D	2400 ou 3300				
Photovoltaic roof height (mm)	E	photovoltaic: 327 / adjustable slates: 347				
Foot dimensions (mm)	G	150x150				
Weight structure of 4-posts version 2400 mm (kg)	330	444	417	501	550	666
Maximum number of PV panels ⁽¹⁾	4	6	6	8	9	12
Maximum number of adjustable slates kit	2 X	2 X	3 X	4 X	2 X	2 X

The installation can be done in free standing (4 feet), wall mounted (2 feet) ; junction possibilities.

Material

Structure: Aluminium 6063 T5

Fasteners : stainless steel A2

Product verified by APAVE

Colours

Powder coated structure with



Anthracite matt granulated grey - RAL 7016

White glossy - RAL 9010

Compatibility with framed photovoltaic modules

Length: 1690 to 1770 mm

Width: 1090 to 1160 mm

Thickness: 30 to 50 mm

Installation conditions to be consulted on: <https://mapergolasolaire.com/supports/>

MA PERGOLA SOLAIRE

export@mapergolasolaire.com

www.mapergolasolaire.com

Your nearest contact:

OPTIONS

- Photovoltaic modules ⁽¹⁾
- Photovoltaic kit (modules, inverters and cables), please contact us

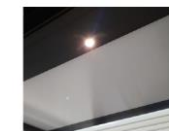


Kit of adjustable blades

Peripheral Strip LED



Built-in LED spotlight



Surrounding screen

Built-in foot bases
Footing section: 150 x 150 mm
(suitable for wall installation – 2 feet)

Ceiling
White polycarbonate plate 16 mm

Smartphone control
DAISY app
WIFI connection

Remote control to activate blades, screens and lighting (ON/OFF, with dimming facility)